

HVAC KEYNOTES:

- 1

PROVIDE HAND/OFF/AUTO. STARTER WITH SWITCH, PILOT LIGHT, FIREMAN'S OVERRIDE, AND CONTROL INTERFACE TO CO/NO2 MONITOR TO OVERRIDE STARTER ON WALL IN THE EVENT OF A CO/NO2 ALARM. WHEN EXHAUST FAN IS STARTED, CORRESPONDING MOTORIZED LOUVER SHALL OPEN. WHEN EXHAUST FAN IS STOPPED, MOTORIZED LOUVER SHALL SHUT.
- 2

PROVIDE WALL MOUNTED COMBINATION LOUVER WHERE INDICATED ABOVE BAY DOOR IN WINDOW FRAME. COORDINATE WITH ARCHITECTURAL DRAWINGS, LOCATION OF STRUCTURE, AND METAL BUILDING CONTRACTOR PRIOR TO ROUGH-IN. LOUVERS SHALL BE INSTALLED WITH FLASHING AND CAULK AS REQUIRED TO PREVENT RAIN INTRUSION. INTERLOCK MOTORIZED DAMPER 120-145 ELEC. SERVICE IN COMBINATION LOUVER WITH CORRESPONDING WALL FAN AS INDICATED. PROVIDE 120 VOLT ACTUATOR AND END SWITCH SUCH THAT WALL FAN SHALL NOT ENERGIZE UNTIL DAMPER IS FULLY OPEN. REFER TO ELECTRICAL PLANS FOR POWER WIRING. MECHANICAL CONTRACTOR TO PROVIDE AND INTERLOCK CONTROL WIRING. COORDINATE WITH ELECTRICAL CONTRACTOR. CONTROL CONDUIT RUN BY ELECTRICAL CONTRACTOR. CONTROL WIRING RUN BY MECHANICAL CONTRACTOR. INSTALL LOUVERS TO MEET HURRICANE CONDITIONS PER MANUFACTURERS INSTALLATION INSTRUCTIONS. COORDINATE FRAMING FOR LOUVERS WITH METAL BUILDING CONTRACTOR.
- 3

INSTALL WALL MOUNTED EXHAUST FAN WITH WEATHER HOOD AND BIRD SCREEN WHERE INDICATED AT MAX HEIGHT IN COORDINATION WITH LIFT CRANE. COORDINATE EXACT LOCATION IN FIELD WITH ARCHITECT, METAL BUILDING CONTRACTOR, AND WITH LOCATION OF STRUCTURE PRIOR TO ROUGH-IN. COORDINATE FRAMED OPENINGS WITH METAL BUILDING CONTRACTOR. SECURE WEATHER HOOD TO WALL TO MEET HURRICANE WIND RATING.
- 4

EXTEND EXHAUST DUCT TO EXTERIOR WALL AND CONNECT TO WALL LOUVER PLENUM BOX FULL SIZE. COORDINATE EXACT LOUVER EXTERIOR WALL LOCATION WITH ARCHITECT PRIOR TO ROUGH-IN. GENERAL CONTRACTOR SHALL COORDINATE FRAMED OPENING THROUGH WALL WITH STRUCTURAL SHOP DRAWINGS.
- 5

INSTALL HIGH VOLUME LOW SPEED (HVLS) FAN MOUNTED TO STRUCTURE AT 20'-8" A.F.F. AND SECURED WITH GUY WIRES. COORDINATE INTERLOCK OF HVLS FANS WITH FIRE ALARM CONTRACTOR PER KEYNOTE 7/FP-101. HVLS FAN CONTROLS SHALL HAVE DRY CONTACTS OR RELAYS TO SHUT DOWN UPON FIRE ALARM COMMAND FOR FLOW DETECTION. COORDINATE FAN MOUNTING HEIGHT WITH MANUFACTURE REQUIREMENTS, STRUCTURE, PIPING, ECT. IN THE FIELD PRIOR TO ROUGH-IN. PROVIDE FACTORY MOUNTING EXTENSION AS REQUIRED. COORDINATE EXACT LOCATION IN FIELD WITH ARCHITECT PRIOR TO ROUGH-IN.

- 6

MOUNT HVLS FAN CONTROLLER ON WALL AT ADA HEIGHT. RUN CONTROL WIRING FROM CONTROLLER TO FAN IN CONDUIT SECURED TO STRUCTURE. PROVIDE LABELS FOR EACH CONTROLLER.
- 7

INSTALL BRASCH ENVIRONMENTAL TECHNOLOGIES GDCP-TOUCH MULTI-ZONE GAS DETECTOR CONTROL PANEL WITH AUDIO/VISUAL ALARM ON WALL IN THIS VICINITY. MONITOR SHALL ACTIVATE EXHAUST FANS EF-11 & 12 AND LOUVERS UPON DETECTION OF CO OR NO2. ALL LOW VOLTAGE WIRING BY MECHANICAL CONTRACTOR SHALL BE CONCEALED IN CONDUIT BY ELECTRICAL CONTRACTOR. COORDINATE WITH ELECTRICAL CONTRACTOR FOR PRIOR TO ROUGH-IN.
- 8

INSTALL BRASCH ENVIRONMENTAL TECHNOLOGIES GEN2-NCM-REMOTE CO/NO2 MONITOR SENSORS. COORDINATE EXACT LOCATION IN FIELD. MOUNT AT HEIGHT REQUIRED BY MANUFACTURER. EXTEND LOW VOLTAGE WIRING FROM REMOTE SENSOR BACK TO MAIN CONTROL PANEL. LOW VOLTAGE SHALL BE SIZED PER MANUFACTURERS RECOMMENDATIONS BASED ON DISTANCE. ALL LOW VOLTAGE WIRING BY MECHANICAL CONTRACTOR SHALL BE CONCEALED IN CONDUIT BY ELECTRICAL CONTRACTOR. COORDINATE WITH ELECTRICAL CONTRACTOR FOR PRIOR TO ROUGH-IN.

R M G

RANDY M. GOODLOE, AIA, APAC

725 KIRBY STREET

LAKE CHARLES, LOUISIANA

OFFICE: 337.436.3036

FAX: 337.436.3773

ARCHITECT



NEW CONSTRUCTION
FORD PRO
FOR
MIKE WILLIS
2010 PATTON ST.

© COPYRIGHT 2019,
RANDY M. GOODLOE, AIA, APAC
ALL INFORMATION, EITHER DRAWN, WRITTEN,
OR IMPLIED APPEARING IN THIS DOCUMENT
SHALL NOT BE DUPLICATED, DISCLOSED, OR
OTHERWISE USED WITHOUT THE WRITTEN
PERMISSION OF THE AUTHOR, RANDY M.
GOODLOE, AIA, APAC. THIS DOCUMENT IS AN
INSTRUMENT OF SERVICE AND IS THE SOLE
PROPERTY OF THE AUTHOR. FURTHERMORE,
THE USE OF THIS DOCUMENT FOR ANY
PURPOSE SHALL BE REVOKED, IF THE INTENT
OR THE DESIGN OR THE CONSTRUCTION
TECHNIQUES OR DETAILS SHOWN HEREIN
ARE NOT ADHERED TO OR THE
CONTRACTUAL AGREEMENT GOVERNING
THEIR USE ARE NOT STRICTLY ADHERED TO.

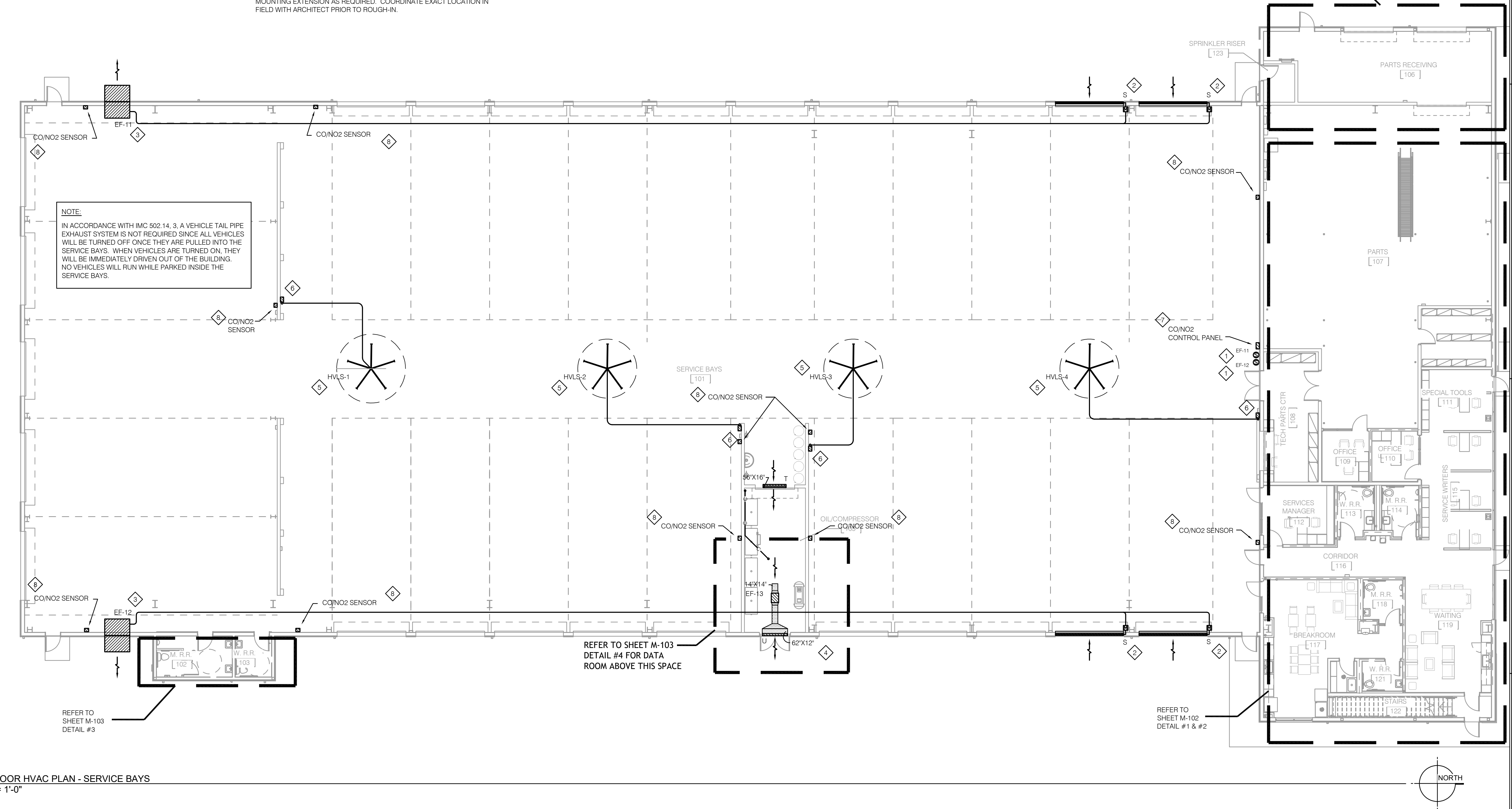
PROJECT NO.	25012
PROJECT MANAGER	JM
DATE ISSUED	2026.05.22
REVISED	

SHEET NUMBER

M-101

HVAC PLAN

1 1ST FLOOR HVAC PLAN - SERVICE BAYS
3/32" = 1'-0"



NOTE:
PROPERLY FIRE CAULK ALL PENETRATIONS THROUGH RATED WALLS. COORDINATE FIRE CAULKING WITH ASSEMBLY REQUIREMENTS. COORDINATE WITH ARCHITECTS PLANS, NOTES, SPECIFICATIONS, ETC.



ASSOCIATED DESIGN GROUP, INC.
3909 W Congress Street, Suite 201
Lafayette, Louisiana 70506
Phone: (337) 234-5710
Email: adginc@adginc.org
Project No. 25326